

# SERIES 865 - PRESSURE TRANSDUCER WITH DISPLAY



## FEATURES & APPLICATIONS

- Easy to Read Display (0.38" Height)
- Available in pressure ranges from 0.5"WC to 0-40PSI
- Output Stability of 0.5%FSO!
- Perfect for a variety of applications such as duct static, VAV, fan control & more!
- Easy wiring via a pluggable screw terminal block!
- Customizable pressure ranges as well as customizable outputs!
- Able to handle extremely high overpressure!
- Internally conditioned allowing it to automatically accept unregulated 12-24VDC or 24VAC power.
- **Reverse Voltage Protection!**
- Standard 2-year warranty!

**For the Most Recent Product Information Visit Our Website at [www.autotraninc.com](http://www.autotraninc.com)**

## Specifications

|  |   |
|--|---|
| Output Accuracy:*                        | +/- 1 %FSO  |
| Output Stability:                        | +/- 0.5 %FSO/yr   |
| Output Therm. Effects (zero):            | +/- 0.075 %FSO/°C   |
| (0.5" Range):                            | +/- 0.150 %FSO/°C   |
| Output Therm. Effects (span):            | +/- 0.01 %FSO/°C  |
| Overpressure:                            | 20PSI or 2x FSP whichever is greater  |
| Pressure Ranges:                         | 0 to 0.5"WC thru 0 to 40PSI (Custom and Bi-Directional ranges also available)   |
| Compensated/Operating temperature Range: | 10°C to 50°C (50 to 122°F)  |
| Media:                                   | Limited only to media that will not attack PPS, PEI, Silicon, Silicone RTV, or fluorosilicone. Note that Liquids are allowed in either or both ports. |
| Operating Humidity:                      | 90% RH Non-cond.  |
| Input Supply:                            | 12-24VDC/ 24VAC**   |
| Supply Current:                          | <30mA   |
| Load Resistance:                         | 2Kohm minimum on voltage output<br>250ohm max loop resistance on 4-20mA (500hm max loop resistance available upon request**)                          |
| Output Signal:                           | 1-5VDC, 1-6VDC, 1-10VDC**, 4-20mA*** (call for custom outputs, most are available)  |
| Circuit Protection:                      | Output Limited and Reverse Voltage Protected  |
| Adjustments:                             | Offset (60% of FSO)<br>Display offset   |
| Electrical Connections:                  | Pluggable Screw Terminal Block  |
| Enclosure:                               | Impact Resistant abs plastic  |
| Dimensions:                              | Approx.. 3.5" x 2.7" x 1.4"<br>(8.7cm x 6.8cm x 3.5cm)  |

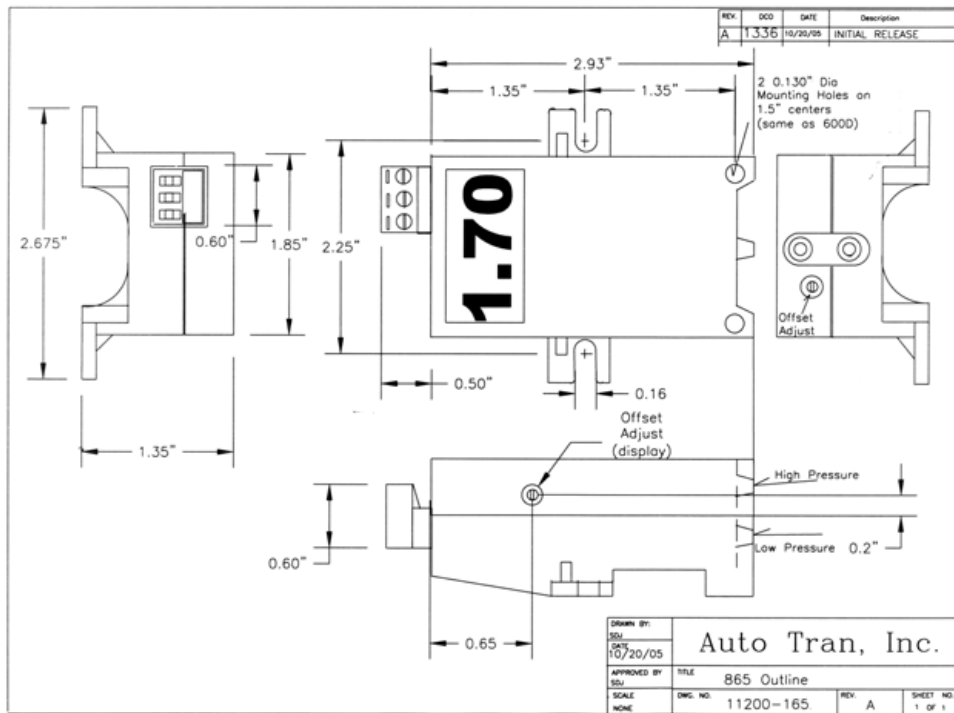
\* Includes non-linearity, hysteresis, and non-repeatability at a fixed temperature.

\*\* An input of 18-24VDC/24AC is required to drive a 500ohm load and to drive a 1-10VDC output and pressure ranges < 1"WC.

\*\*\* 3-wire 4-20Ma

**AUTO TRAN**  
INCORPORATED

7638 Washington Ave. South \* Eden Prairie, MN 55344  
(800)735-8998 \* (952)942-8743 \* FAX (952) 942-8753  
[www.autotraninc.com](http://www.autotraninc.com)



## HOW TO ORDER

A TYPICAL ORDER NUMBER CONSISTS OF THE MODEL NUMBER, TYPE, OUTPUT SIGNAL, AND PRESSURE RANGE.

| <u>MODEL</u> | <u>TYPE</u>                 | <u>OUTPUT SIGNAL</u>   | <u>PRESSURE RANGE*</u>   |
|--------------|-----------------------------|--|--|
| 865          | D=DIFFERENTIAL<br>OR GAGE** | 0..... 1 TO 5 VOLTS<br>1..... 1 TO 6 VOLTS<br>2..... 1 TO 10 VOLTS***<br>3..... 4 TO 20MA (250OHM LOAD)<br>4..... 4 TO 20MA (500OHM LOAD)***<br>5..... CUSTOM OUTPUT | 0..... 0.5 TO 5"WC<br>1..... >5" TO 13"WC<br>2..... >0.5P TO IP<br>3..... >IP TO 5P<br>4..... >5P TO 15P<br>5..... >15PTO 30P<br>6..... >30PTO 40P |

EXAMPLE: 865D-01 CAL PRESSURE=6"WC. (NOTE: YOU MUST INDICATE EXACT PRESSURE UNIT SHOULD BE CALIBRATED TO SINCE "PRESSURE RANGE" IS NOT A SPECIFIC NUMBER. (THIS UNIT HAS AN OUTPUT OF 1-5VDC & WILL BE CALIBRATED TO 6"WC.) IF A CUSTOM OUTPUT IS NEEDED THE EXACT OUTPUT MUST BE SPECIFIED.

- \* DIFFERENT PRESSURE UNITS AVAILABLE (E.G. IN. HG, KPA, AND MANY MORE) - CONSULT AUTO TRAN FOR DETAILS
- \*\* WITH A GAGE APPLICATION, ONE OF THE TWO PORTS IS VENTED TO ATMOSPHERE.
- \*\*\* WITH A 1-10VDC OUTPUT AS WELL AS WITH A 4-20MA OUTPUT THAT NEEDS TO DRIVE A 500OHM LOAD, AN 18-24VDC/24VAC INPUT IS REQUIRED.

## WARRANTY

Any regular AutoTran product that proves to be defective in material or workmanship within a warranty period of two (2) years will be repaired or replaced when returned freight prepaid.

**Note:** AutoTran reserves the right to change its specification at any time, without notice. AutoTran is not expert in the customer's technical field and therefore does not warrant the suitability of its product for the application selected by the customer.

**AUTO TRAN**  
I N C O R P O R A T E D

7638 Washington Ave. South \* Eden Prairie, MN 55344  
(800)735-8998 \* (952)942-8743 \* FAX (952) 942-8753  
www.autotraninc.com