



SERIES 880 - TWO WIRE 4 TO 20MA PRESSURE TRANSMITTER SPECIFICATIONS

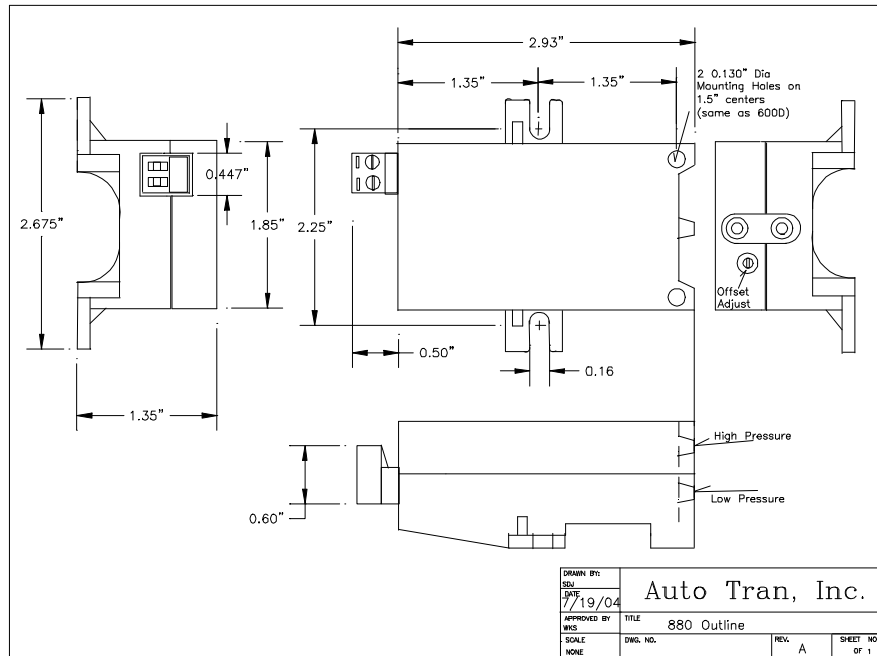
FEATURES & APPLICATIONS

- ¥ Available in pressure ranges from 1"WC to 0-40PSI
- ¥ Stability of 0.5% FSO!
- ¥ Perfect for a variety of applications such as duct static, VAV, fan control & more!
- ¥ Easy wiring via a pluggable screw terminal block!
- ¥ Customizable pressure ranges and outputs!
- ¥ Able to handle extremely high overpressure!
- ¥ Two Wire 4-20mA Output
- ¥ **Reverse Voltage Protection!**
- ¥ Standard 2-year warranty!

For the Most Recent Product
Information Visit Our Website at
www.autotraninc.com

Accuracy:*	+/-1% FSO
Stability:	+/-0.5% FSO/yr
Thermal Effects (zero):	+/-0.075% FSO/°C
Thermal Effects (span):	+/-0.01% FSO/°C
Overpressure:	20PSI or 2x FSP whichever is greater
Pressure Ranges:	0 to 1"WC thru 0 to 40PSI (Custom and Bi-Directional ranges also available)
Compensated Range:	10 °C to 50 °C (50 °F to 122 °F)
Media:	Limited only to media that will not attack PPS, PEI, Silicon, Silicone RTV, or fluorosilicone. Liquids are allowed in either port.
Operating Humidity:	10 to 90% RH Non-cond.
Operating Temperature:	-25°C to 70°C (-13 to 158°F)
Input Supply:	14-36VDC Loop Voltage Range (24Vac may be acceptable for certain applications)
Maximum Loop Resistance:	(Vs-14) x 50 ohms, maximum
Minimum Loop Resistance for supply voltage > 30Vdc:	(Vs-30) x 40 ohms, minimum
Output Signal:	4 to 20mA 2-Wire
Circuit Protection:	Output Limited and Reverse Voltage Protected
Adjustments:	Offset (60% of FSO)
Electrical Connections:	Pluggable two-wire Screw Terminal Block
Enclosure:	Impact Resistant ABS Plastic
Dimensions:	Approx. 3.5" x 2.7" x 1.4" (8.7cm x 6.8cm x 3.5cm)

* Includes non-linearity, hysteresis, and non-repeatability at a fixed temperature.



HOW TO ORDER

A TYPICAL ORDER NUMBER CONSISTS OF THE MODEL NUMBER, TYPE, VERSION, INPUT SUPPLY, AND OUTPUT SIGNAL.

<u>MODEL</u>	<u>TYPE*</u>	<u>PRESSURE RANGES**</u>	<u>INPUT SUPPLY***</u>	<u>OUTPUT SIGNAL</u>
880	D	0 TO 1"WC THRU 0 TO 40PSI (ALSO AVAILABLE IN CUSTOM OR BI-DIRECTIONAL RANGES, FOR INSTANCE +/-2"WC)	14-36VDC (24VAC MAY BE ACCEPTABLE FOR CERTAIN APPLICATIONS)	4 TO 20MA - 2-WIRE

* WITH A GAGE APPLICATION, ONE OF THE TWO PORTS IS VENTED TO ATMOSPHERE.

** MANY PRESSURE UNITS ARE AVAILABLE - CONSULT AUTOTRAN FOR DETAILS

*** $V_{S,MINIMUM} = [RL/(50) + 14VDC]$; $V_{S,MAX} = [RL/(40) + 30VDC]$

WARRANTY

Any regular AutoTran product that proves to be defective in material or workmanship within a warranty period of two (2) years will be repaired or replaced when returned freight prepaid.

Note: AutoTran reserves the right to change its specification at any time, without notice. AutoTran is not expert in the customer's technical field and therefore does not warrant the suitability of its product for the application selected by the customer.

AUTO TRAN
INCORPORATED

7638 Washington Ave. South * Eden Prairie, MN 55344
(800)735-8998 * (952)942-8743 * FAX (952) 942-8753
www.autotraninc.com